

# WHAT IS THE NPDB?

## The National Practitioner Data Bank



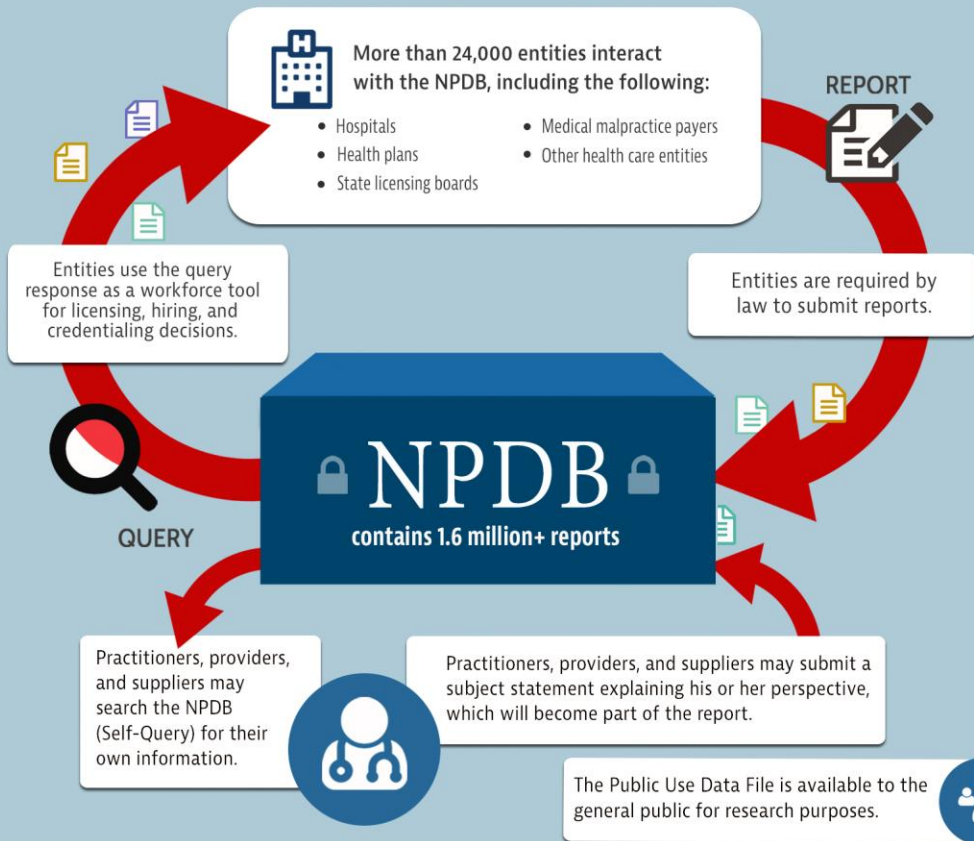
is a web-based repository of reports used as a workforce tool to enhance professional review efforts, and prevent health care fraud and abuse, with the ultimate goal of protecting the public.



Registered, authorized entities must submit certain information concerning medical malpractice payments, adverse actions, and judgment or conviction reports regarding health care practitioners, providers, and suppliers.

## HOW THE NPDB WORKS

Only registered entities have access to reports.



## WHAT'S IN THE NPDB?

- 1.1 million+** **Adverse Action Reports**  
Certain adverse licensure, certification, and clinical privileges actions taken by state and federal licensing and certification authorities, hospitals, and other health care organizations.
- 483,000+** **Medical Malpractice Payment Reports**  
Payments made for the benefit of a health care practitioner relating to a written claim or judgment for medical malpractice.
- 39,000+** **Judgment or Conviction Reports**  
Health care-related civil judgments or criminal convictions taken in a federal or state court.

Cumulative data as of Dec. 2021

### Last year the NPDB

### provided 10.6 million+ query responses

### and received 66,000+ reports

Data for Jan.-Dec. 2021

